



# RurAL CAP

Rural Alaska Community Action Program, Inc.



## Muldoon Garden

207 Muldoon Rd., Anchorage, AK 99504

### | The Rural Community Action Program

(RurAL CAP) has made a commitment to aid chronically homeless, vulnerable individuals who have a very high level of need by providing transitional and permanent housing opportunities with access to behavioral health and supportive services.

Permanent housing provides long-term support, helping individuals move towards economic independence.

### Pricing Varies |

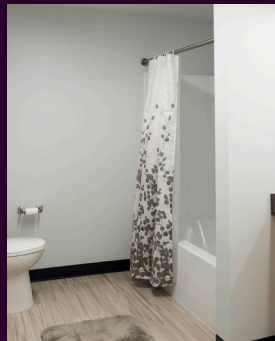
Income-Based/Month

1 BD / 1 BA: \$825 - \$875/Month

2 BD / 1 BA: \$975 - \$1,000/Month

### Includes |

- Income Eligibility Restrictions
- Accessible Units are Available
- Elevator
- On-Site Laundry
- On-Site and Off-Street Parking
- Utilities Included (except phone and cable)



**Contact Us** | 907.868.4600 | [propertymanagement@ruralcap.org](mailto:propertymanagement@ruralcap.org) | [www.ruralcap.org](http://www.ruralcap.org)



*Equal Housing Opportunity Statement: We are pledged to the letter and spirit of U.S. policy for the achievement of equal housing opportunity throughout the Nation. We encourage and support an affirmative advertising and marketing program in which there are no barriers to obtaining housing because of race, color, religion, sex, disability, familial status, or national origin.*